

## KEY PORTFOLIO FIGURES



## SOCIAL PERFORMANCE

As of 31 December 2023



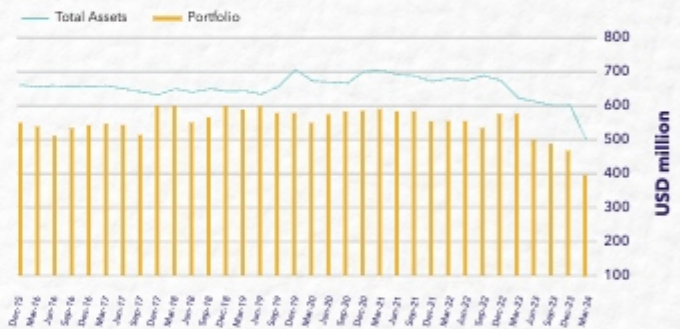
## PORTFOLIO DEVELOPMENT

During Q1 2024, the new gender-smart strategy of the Fund was being implemented and tools were being developed, thus facilitating pipeline development and discussions with potential partner financial intermediaries (PFIs). New investments are expected to start in Q2 2024.

## SINCE INCEPTION



## PORTFOLIO GROWTH



## ESTA DANA VENTURA IMPROVING FINANCIAL INCLUSION IN INDONESIA THROUGH WOMEN-FOCUSED MICROFINANCING

Esta Dana Ventura obtained a loan from GGSF to bolster its microloan portfolio, particularly to finance and empower Indonesian women, who account for 95% of its borrowers. This funding enabled the expansion of the institution's network into remote regions of Indonesia, such as Ternate and North Maluku, increasing the number of female borrowers to more than 250,000, with a total portfolio of almost USD 80 million. Esta Dana Ventura's network has grown from 48 branches in 2017 to 217 branches across Indonesia by 2023.

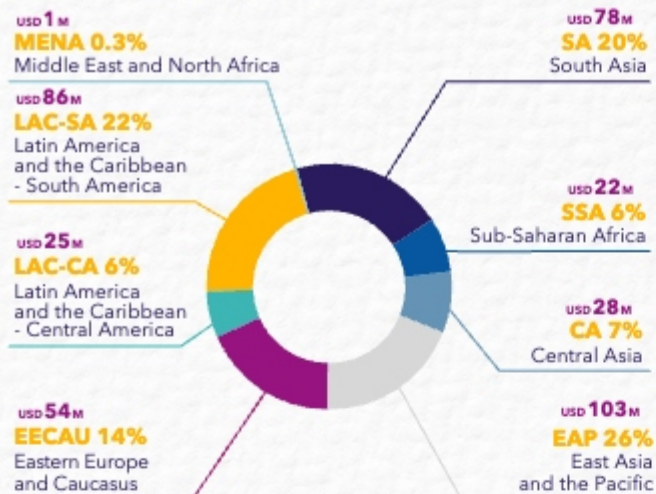
The GGSF funding also supported the institution's liquidity, enabling it to provide financial assistance to clients while investing in and continuously upgrading their technology, establishing itself as one of the most digitally advanced microfinance institutions in Indonesia.

Beyond financial stability, the loans provided by Esta Dana Ventura to its end borrowers instil a renewed sense of hope and confidence in clients, empowering them to overcome challenges, develop their businesses, create new job opportunities, stimulate local economies, and contribute to the overall vitality of the business ecosystem.

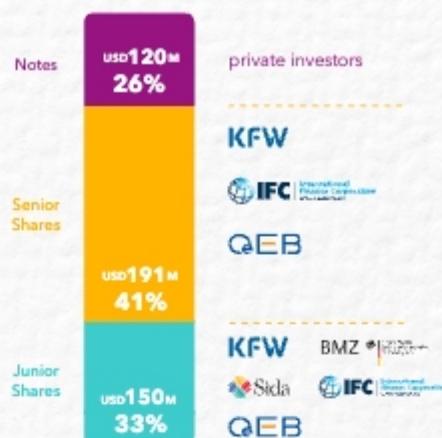


An exemplary initiative is AkuEsta, a project where women are trained to create handcrafted bags, with the necessary materials financed until the products are sold. This project predominantly supports women, with 95% of its loans directed to female entrepreneurs. Furthermore, 76% of its workforce consists of women, emphasizing its commitment to empowering women through both financial support and employment opportunities.

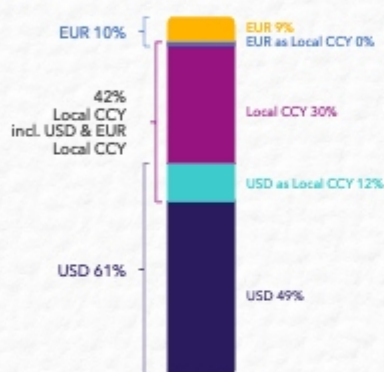
## REGIONAL DISTRIBUTION



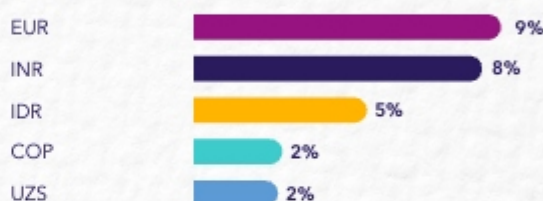
## FUNDING STRUCTURE



## LOCAL CURRENCIES



## TOP 5 LOCAL CURRENCIES



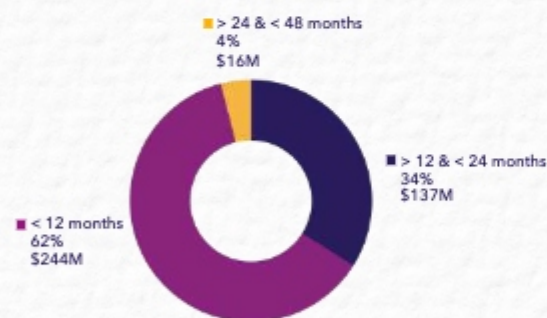
**Local currencies:** CNH, COP, EUR, GEL, HNL, IDR, INR, KES, KGS, KZT, MMK, MWK, MXN, NGN, PEN, PHP, PLN, TJS, TZS, USD, UZS.

**EUR - Local CCY:** EUR as legal tender in Montenegro and Kosovo

**USD - Local CCY:** USD as legal tender in Ecuador, El Salvador and Panama

All investments hedged to USD

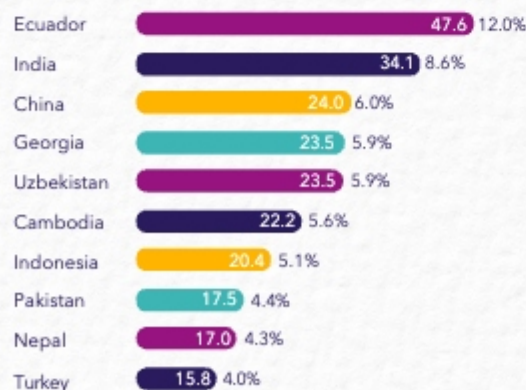
## MATURITIES



## INVESTMENT TYPE



## TOP 10 COUNTRIES



## TOP 10 EXPOSURES



**Total Portfolio Net Exposure - in USDM**  
(as of 31 March 2024)

Country	Region	Total Portfolio Net Exposure - in USDM			Quarterly disbursements		
		Total	USD/EUR	LCY	Total	USD/EUR	LCY
Albania	EECAU	4.3	4.3	-	-	-	-
Armenia	EECAU	2.5	2.5	-	-	-	-
Bangladesh	SA	3.2	3.2	-	-	-	-
Bolivia	LAC-SA	9.3	9.3	-	-	-	-
Bosnia and Herzegovina	EECAU	1.1	1.1	-	-	-	-
Botswana	SSA	5.3	5.3	-	-	-	-
Cambodia	EAP	22.3	22.3	-	-	-	-
China	EAP	24.0	19.5	4.5	-	-	-
Colombia	LAC-SA	9.5	-	9.5	-	-	-
Costa Rica	LAC-CA	8.0	8.0	-	-	-	-
Ecuador	LAC-SA	47.6	-	47.6	-	-	-
Georgia	EECAU	23.5	17.1	6.4	-	-	-
Haiti	LAC-CA	0.9	0.9	-	-	-	-
Honduras	LAC-CA	1.0	-	1.0	-	-	-
India	SA	34.1	2.0	32.1	-	-	-
Indonesia	EAP	20.4	-	20.4	-	-	-
Kazakhstan	CA	11.1	8.1	3.0	-	-	-
Kenya	SSA	8.0	7.2	0.9	-	-	-
Kosovo	EECAU	1.8	-	1.8	-	-	-
Kyrgyz Republic	CA	1.5	-	1.5	-	-	-
Lebanon	MENA	-	-	-	-	-	-
Malawi	SSA	0.7	-	0.7	-	-	-
Mexico	LAC-CA	3.5	0.3	3.2	-	-	-
Moldova	EECAU	5.2	5.2	-	-	-	-
Mongolia	EAP	10.0	10.0	-	-	-	-
Myanmar	EAP	2.6	1.0	1.6	-	-	-
Nepal	SA	17.1	17.1	-	-	-	-
Nicaragua	LAC-CA	11.8	11.8	-	-	-	-
Nigeria	SSA	2.0	-	2.0	-	-	-
Pakistan	LAC-SA	17.5	17.5	-	-	-	-
Palestine	MENA	0.3	0.3	-	-	-	-
Paraguay	LAC-SA	2.5	2.5	-	-	-	-
Peru	LAC-SA	6.5	1.1	5.4	-	-	-
Philippines	EAP	7.2	-	7.2	-	-	-
Poland	EECAU	-	-	-	-	-	-
Sri Lanka	SA	7.8	7.8	-	-	-	-
Tajikistan	CA	0.4	-	0.4	-	-	-
Tanzania	SSA	4.1	-	4.1	-	-	-
Timor-Leste	EAP	1.5	1.5	-	-	-	-
Tunisia	MENA	0.8	0.8	-	-	-	-
Turkey	EECAU	15.8	15.8	-	-	-	-
Uganda	SSA	2.0	2.0	-	-	-	-
Uzbekistan	CA	23.4	10.0	13.4	-	-	-
Vietnam	EAP	15.0	15.0	-	-	-	-
<b>Total</b>		<b>396.9</b>	<b>230.3</b>	<b>166.7</b>	<b>-</b>	<b>-</b>	<b>-</b>

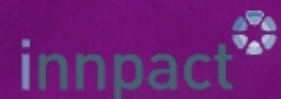


**FUND REGISTERED OFFICE**

5, rue Jean Monnet  
2180 Luxembourg Grand-Duchy  
of Luxembourg

**AIFM**

**Fund Management S.A.**  
5, rue Jean Bertels  
1230 Luxembourg  
Grand-Duchy of Luxembourg  
info@ggs-fund.com



Advised by three leading private Portfolio Managers coordinated by fund's AIFM

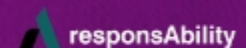
**INVESTMENT ADVISORS – PORTFOLIO DISTRIBUTION**



**Triple Jump B.V.**  
Mensinghe 78  
1083 HG, Amsterdam  
Netherlands  
info@triplejump.eu



**Incofin Investment Management**  
Sneeuwbeslaan 20 PB2  
2610 Antwerp - Belgium  
info@incofin.com



**ResponsAbility Investments AG**  
Josefstrasse 59  
8005 Zurich - Switzerland  
info@responsAbility.com

**DISCLAIMER**

GLOBAL GENDER SMART FUND S.A., SICAV-SIF (the "Fund" or "GGSF") is an investment company with variable capital (a "société d'investissement à capital variable" - SICAV), organised as a public limited company (a "société anonyme") under the laws of the Grand Duchy of Luxembourg and qualifies as a specialised investment fund ("fonds d'investissement spécialisée" - SIF) within the meaning of the Luxembourg law of 13 February 2007. The Fund further qualifies as an externally managed alternative investment fund within the meaning of article 1 (39) of the Luxembourg law of 13 July 2013 on alternative investment fund managers, as amended (the "AIFM Law"). The Fund has appointed InnPact Fund Management S.A. as its external AIFM within the meaning of article 4 of the AIFM Law and article 5 of the Directive 2011/61/EU of the European Parliament and of the Council of 8 June 2011 on alternative investment fund managers ("AIFMD"). This document is not sufficient to allow investors to commit to acquiring interests, units or shares of the Fund nor any other alternative investment fund ("AIF") under AIFMD, shall not amount to subscription forms or similar documents whether in a draft or a final form, nor amount to constitutional documents, a prospectus, issue document or offering documents in a final form. This document is not intended to be and does not constitute an offer or an invitation to subscribe to

interests, units or shares of the Fund nor any other AIF. The information presented herein should not be relied upon because it is incomplete and may be subject to changes.

This document is confidential and is intended solely for the recipient and may not be duplicated, distributed or published either in electronic or any other form without the prior written consent of the AIFM.

The information contained herein is provided for informational purposes only, is not complete, and does not contain certain material information about the Fund, including important disclosures and risk factors associated with an investment in the Fund, and is subject to change without notice. In the event of any conflict between information contained herein and information contained in the issue document of the Fund, the information in the issue document of the Fund will control and supersede the information contained herein. The information herein is not intended to provide, and should not be relied upon for accounting, legal or tax advice, or investment recommendations. You should make an independent investigation of the information described herein, including consulting your tax, legal, accounting or other advisors about the matters discussed herein.